

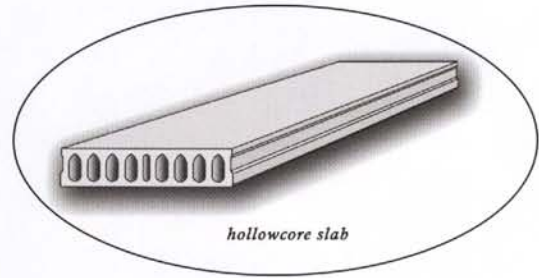
# **CEMENT INDUSTRIES, INC.**

## **Spancrete® Hollowcore and Tilt Up Building System**



- **SPEED OF CONSTRUCTION**
- **COST SAVINGS**
- **FIRE RESISTANCE**



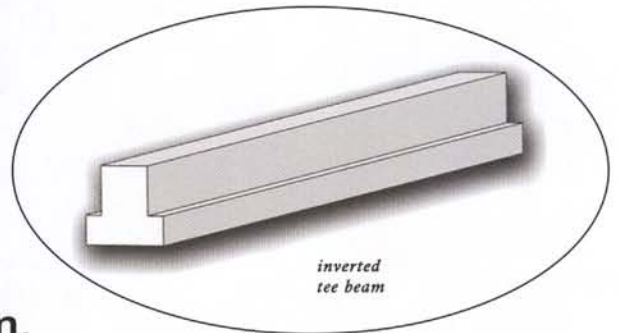


*hollowcore slab*

**Spancrete® is prestressed hollowcore plank used for floors and roofs which can be combined with other precast/prestressed products to offer a total system to the end user.**



**Hollowcore and tilt wall construction is the system of choice for commercial structures. No other building system can offer the advantages of rapid construction, cost reducing benefits and structural integrity that Cement Industries can using this proven system.**



*inverted tee beam*

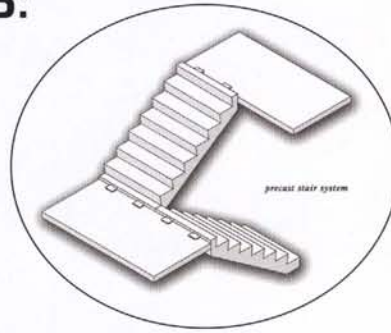
**Cement Industries has constructed many schools and office buildings with the hollowcore - tilt wall system. Our system has proven to be a very cost efficient prototype for Lee County Middle Schools, as well as for several Charter Schools U.S.A. projects.**



**This economical system can be installed quickly and easily, saving time and money.**

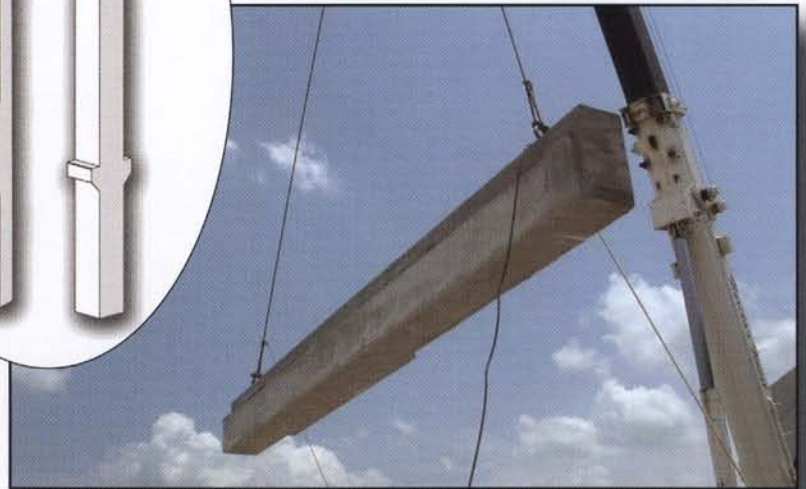
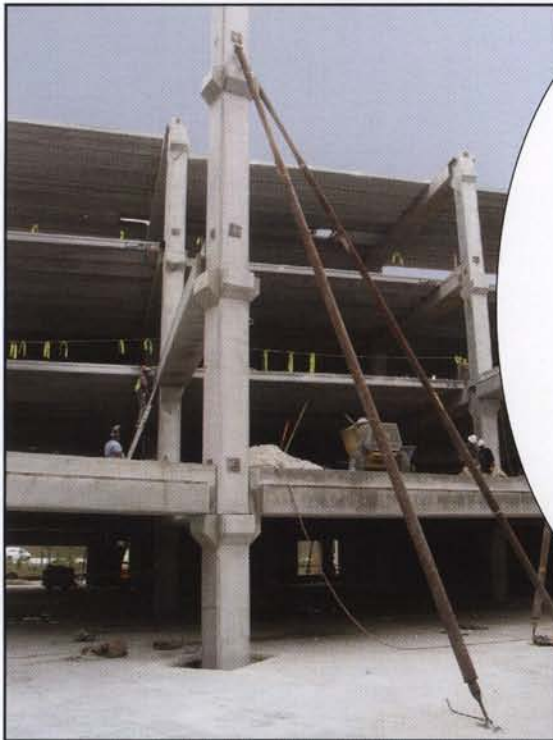
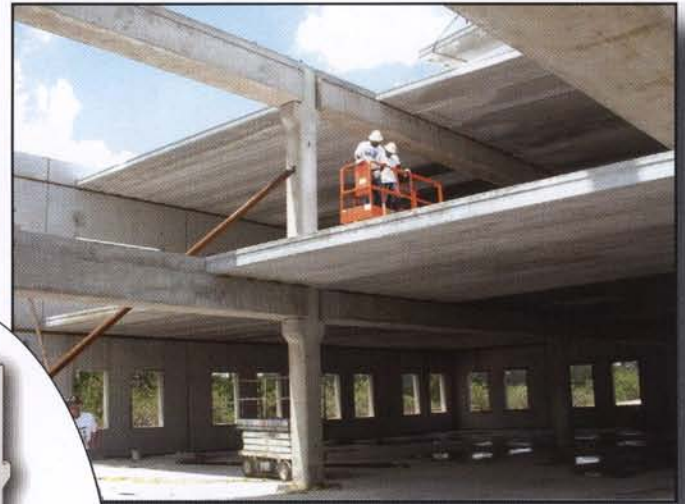
## TOTAL SYSTEM INCLUDES:

- Tilt Up
- Columns
- IT Beams
- Hollowcore
- Stairs



Concurrent with the tilt-up phase, Cement Industries moves in with its columns, IT beams and hollowcore, completing the shell of the building.

The precast components arrive at the jobsite ready to erect. A small crew can erect 8,000 square feet of plank per day, creating an immediate work deck for other trades that does not require any expensive fire proofing.



The benefits for our clients using this proven system are many - lower financing costs, faster occupancy and earlier return on investment. Builders of low-rise and mid-rise offices will find this cost competitive system has the advantages of lower insurance premiums, reduced maintenance outlay and better resale value.

***BE SURE TO CALL CEMENT INDUSTRIES TODAY TO CONSULT ABOUT YOUR FUTURE PROJECTS.***



*"The combination of Spancrete® hollowcore, column, beam and tilt-up construction is quick to erect, offers a solid structure with design flexibility and results in satisfied owners and tenants."*

**John McGarvey**  
**McGarvey Development Company**



## **CEMENT INDUSTRIES, INC.**

Post Office Box 823 • Fort Myers, FL 33902-0823  
Telephone (239) 332-1440 • Fax (239) 332-7144 • Toll Free 1-800-332-1440  
Web site: [www.cementindustries.com](http://www.cementindustries.com)

***Building for Tomorrow Since 1953***